



LOCAL TALENT · UNIVERSAL APPEAL



***SOUNDS OF
THE SCREEN***
DIGITAL PROGRAM

Thanks for saving a tree!

This is a CLICKABLE program!

Enjoy the Show!



**SOUNDS OF
THE SCREEN**
FEATURING LISA HARMAN



Directed by Will Esterling

**Including selections
from *Star Wars*, *Pirates
of the Caribbean*,
James Bond, *Titanic*, and
so much more!**



Saturday May 04, 2024 @ 3:00 PM
Nancy R. & Norton T. Dodge PAC
St. Mary's College of Maryland

Sunday May 05, 2024 @ 3:00 PM
Patuxent High School



SUPPORT COSMIC SYMPHONY

Donate via PayPal or visit

www.cosmicsymphony.org/donate



Become an integral part of the COSMIC Symphony family by donating monthly with Givebutter!



www.givebutter.com/donatecosmic

Cash and check donations are always accepted in the lobby at COSMIC Symphony concerts!

Anonymous donors from our concert audiences have contributed more than \$5,000 over the past year!

THANK YOU!



PLEASE OBSERVE THE BELOW PERFORMANCE SPACE POLICIES:

- NO FOOD, DRINK, GUM, OR TOBACCO PRODUCTS ARE PERMITTED WITHOUT THE CONSENT OF THE DIRECTOR OF PRODUCTION AND EVENTS.
- FLASH PHOTOGRAPHY DURING PERFORMANCES IS PROHIBITED.
- NO VIDEO OR AUDIO RECORDING OF EVENTS WITHOUT THE EXPRESSED PERMISSION OF THE PERFORMERS.
- DO NOT PLACE YOUR FEET ON THE SEAT IN FRONT OF YOU.
- SILENCE ALL ELECTRONIC DEVICES.
- PLEASE REMOVE DISRUPTIVE/NOISY CHILDREN FROM THE PERFORMANCE.
- EVENTS WILL BE BROADCASTED IN THE LOBBY FOR THOSE WHO MUST LEAVE THE AUDITORIUM.



Wow, another amazing season for COSMIC Symphony, your community orchestra! We are thrilled our social media and concert audiences are growing and that you joined us today. Please continue sharing about COSMIC to your friends, family, and colleagues as it's working. Community support keeps the concerts FREE and provides much-needed opportunities for local musicians to share their talent.

We are delighted to partner with Lisa Harman. My husband Joe and I met Lisa on a European cruise last summer. We were so impressed with her performance we made a point to connect with her during the cruise. We found out she lived near Maryland and mentioned our pops concert and how she would sound amazing with an orchestra accompaniment. She said YES and we immediately began working on setting up the program. Working with Lisa on this performance has been a treat. Her professionalism and genuine love of music shines through all she does. Please join us in giving Lisa a warm Southern Maryland welcome!

As always, we are thankful to our many behind-the-scenes volunteers, Board of Directors, and Mindy Striep for her fabulous graphics and program designs this season! Thanks again to you our audience for coming to our concerts and supporting us with your generous donations! Thanks to the Nancy R. and Norton T. Dodge for becoming our St. Mary's County home. We are pleased to announce a new relationship with Chesapeake Church in Huntingtown as our Calvert County home next season! Be sure to check Facebook, Instagram, and our website, www.cosmicsymphony.org, for the latest 2024-2025 news.

Musically yours,

Karen Roberts
President, COSMIC Symphony Board of Directors



Dear Esteemed Audience,

Welcome to the COSMIC Symphony's much-anticipated concert, *Sounds of the Screen* featuring Lisa Harman. It is with great pleasure and excitement that I extend my warmest greetings to each and every one of you.

Tonight, prepare to embark on a mesmerizing journey through the captivating world of cinema as we bring to life the unforgettable melodies from well-known movies. From timeless classics to modern masterpieces, our orchestra will transport you through the evocative landscapes of film scores.

Adding an extra layer of enchantment to this evening's performance, we are thrilled to have the internationally acclaimed singer, Lisa Harman, grace our stage. Her voice, renowned for its depth and emotion, will intertwine seamlessly with the melodies, elevating the cinematic experience to new heights.

Thank you for joining us on this musical odyssey. Sit back, relax, and let the *Sounds of the Screen* envelop you in their magic.

Sincerely,

Will Esterling
Music Director, COSMIC Symphony

PROGRAM

COSMIC Flute Choir

<i>Baby Elephant Walk</i>	Henry Mancini (1924 - 1994) arr. Lisa L. Ochocho
<i>Forrest Gump Suite</i>	Alan Silvestri (b. 1950) arr. Lisa L. Ochocho
<i>Under the Sea</i>	Alan Menken (b. 1949) arr. Lisa L. Ochocho
<i>Beauty and the Beast</i>	Alan Menken (b. 1949) arr. Lisa L. Ochocho

COSMIC Symphony

<i>Suite from The Star Wars' Epic</i>	John Williams (b. 1932) arr. Robert W. Smith
<i>Pirates of the Caribbean Medley</i>	Klaus Badelt (b. 1967) arr. Ted Ricketts
<i>James Bond Medley</i>	Various Artists arr. Victor Lopez

INTERMISSION

<i>Skyfall</i>	Adele Adkins (b. 1988) & Paul Epworth (b. 1974) arr. J.A.C. Redford
<i>Send in the Clowns</i>	Stephen Sondheim (1930 - 2021)
<i>I Dreamed a Dream</i>	Claude-Michel Schönberg (b. 1944) arr. Bob Kroghstad
<i>Evergreen</i>	Barbra Streisand (b. 1942) & Paul Williams (b. 1940)
<i>Memory</i>	Andrew Lloyd Webber (b. 1948) arr. Sutton Scales orch. Will Esterling
<i>What a Wonderful World</i>	George Douglas (1922 - 1996) & George David Weiss (1921 - 2010)
<i>My Heart Will Go On</i>	James Horner (1953 - 2015) arr. Arianna Cunningham

This program is approximately two hours in length.

MUSIC DIRECTOR: *Will Esterling*

Will Esterling, a native of Wilmington, Delaware, is a passionate and dedicated music director, educator, and trombonist who has spent his life immersed in the world of music. His journey from a supportive musical upbringing to becoming the Music Director of the COSMIC Symphony is a testament to his unwavering commitment to the art of music.

Born and raised in Wilmington, Delaware, Will Esterling was fortunate to grow up in a household that encouraged and celebrated music. His journey as a musician began in the fourth grade when he picked up the trombone. This early connection to music sparked a lifelong passion that would define his career.

Will's educational journey led him to pursue music at a higher level. He earned a Bachelor's degree in Music from Ithaca College, where he majored in Music Education and Trombone Performance.

His dedication to his craft didn't stop there, as he continued his studies and achieved a Master's degree in Conducting from the Catholic University of America.

Throughout his career, Will Esterling has held several key roles in the world of music. He served as the assistant conductor to the New Orchestra of Washington (NOW), contributing to the orchestra's artistic vision and musical excellence. Additionally, he brought his talents and expertise to the Maryland Classic Youth Orchestra (MCRYO) as their assistant conductor.

As the Pep Band Director at American University, Will's leadership and musical direction added an electrifying dimension to campus life. He also assumed the role of Coordinator for the Winds Department at the Levine Community Music School, where he guided and inspired young musicians to reach their full potential.

Currently, Will serves as a trombonist with the 287th Army Band of the Delaware National Guard, where he continues to share his musical talents and dedication to service. His educational journey brought him to Tyler Elementary in SE Washington, DC, where he teaches music, shaping the next generation of musicians.

Will Esterling's life is defined by his mission to serve people through music, both as an educator and performer. His commitment to music education and his passion for performing have touched the lives of many, making him a respected figure in the musical community.



Will's journey has been enriched by the guidance of notable mentors, including Marin Alsop, Murry Sidlin, James Ross, and Simeone Tartaglione. These influential figures have helped shape his understanding of music and conducting.

An advocate for modern music and progressive programming, Will Esterling is dedicated to expanding the horizons of musical exploration and ensuring that the art form continues to evolve.

Will Esterling's journey from a supportive home in Delaware to the role of Music Director of the COSMIC Symphony is a testament to his unwavering dedication, musical prowess, and passion for educating and inspiring others through music. His life's work is a harmonious fusion of artistic expression and community service, making him a dynamic force in the world of music.

INTERNATIONAL VOCALIST

LISA HARMAN

Universally loved for her vivacious stage presence, multi-talented entertainer Lisa Harman is an accomplished pianist, singer, musical director, and songwriter. As a musical prodigy, Lisa started playing the piano at the age of 3. At age 7 Lisa performed in piano recitals at Brighton Pavillion and toured the USA in her teens as vocal soloist with the National Youth Choir of Great Britain. Ms. Harman began her professional career as both cabaret artiste and Musical Director for a variety of theatre shows, leading her to the starring role of



Rizzo in *Grease*. British television star, Jane McDonald, was quick to spot Lisa's Songwriting skills, performing several of her songs on TV, tours, and her albums. For almost 2 decades Lisa had been the featured vocalist with the renowned Empress Orchestra in the iconic Blackpool Tower Ballroom. Since 2015, Lisa has thrilled audiences in every cruise venue at sea, culminating in her current theatrical blend of both virtuoso piano and sublime vocals.



COSMIC FLUTE CHOIR

Piccolo

Carrie Cooper

Bass Flute

Christa Benner

C Flute

Jennifer Anderson
Maria Broome-Eason
Carrie Cooper
Sara Espinosa
Elizabeth Harvey
Macy McCombs
Kristen Moore
Nicole Thompson

Alto Flute

Linda Henry

Contrabass Flute

Patty Lafferty



COSMIC SYMPHONY

First Violins

Dave Kung, concertmaster
Darren Sakai
Marcia Van Gemert
Ginny Norris
Jane Liang
Gianna Heisey
Deborah Sauper
Pierre Petitjean

Second Violins

Carolyn Graessle, principal
Maria Heisey
Jerry Mobley
Alan Newhouse
Diana Chan
Julia Nichols

Violas

Holly Gutierrez, principal
AnneMarie Karnbach
Kori Olszewski
Mindy Striep
Tristan Moore
Aarav Sharma

Cellos

Stephanie Gleason, principal
Leroy Mrozowski
Kathleen Hiner
Mariel Ludwig
Innes Borstel

Basses

Patricia Lafferty, principal
Kasey Ferm
Andrew Stone

Flutes

Linda Henry, principal
Christa Benner
Carrie Cooper, piccolo

Oboes

Karen Roberts, principal
Janet Gross, English horn

Clarinets

Tony Avak, principal
Michael Sullivan
David Schug

Bassoons

Benjamin Henry, principal
Rebecca Moore

Horns

Steve Woods, principal
Nicole Thompson
Skylar Schirtzinger
Stefie Bartley

Trumpets

David Roan, principal
Leigh DePiazza
Ross Thompson

Trombones

Greg Wallace, principal
Tyler Hutchinson
Richard Stattel, bass trombone

Tubas

Rob Benner, principal
Joe Price

Percussion

Kevin Stevens, principal
Blaine Becker
Michael Waby
James Rieder

Keyboard

Tom Anderson, principal

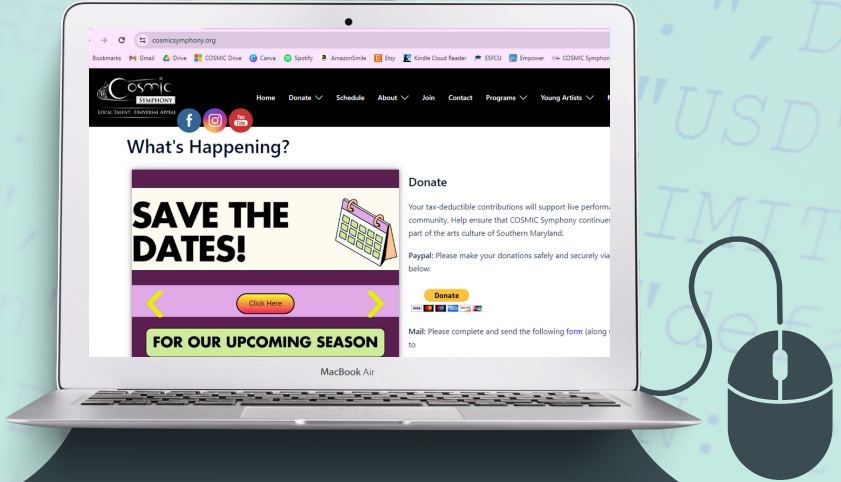
Harp

Flora Cole, principal

Guitar

Joe Scrittore, principal

www.cosmicsymphony.org



Check Out COSMIC on the Web!

Learn about upcoming and past events

Join the orchestra

Sign up for our email list

View our Facebook Feed

Learn more about COSMIC

...AND MORE!



COSMIC SYMPHONY'S YOUNG ARTIST COMPETITION 2024

COSMIC Symphony of Southern Maryland is looking for outstanding musicians ages 24 and younger interested in competing for the chance to perform a solo in concert with COSMIC Symphony and receive a cash prize!

This opportunity is open to all instruments and voice types.

**APPLICATIONS NOW OPEN
APPLY BY JULY 1, 2024**

www.tinyurl.com/cosmicyacapp

Follow COSMIC Symphony on Facebook and Instagram, and keep an eye on www.cosmicsymphony.org/young-artists/ for the latest info!
Questions? Email orchestra@cosmicsymphony.org

COSMIC BOARD OF DIRECTORS

Executive Board

Karen Roberts, *President*
Julia Nichols, *Vice President*
Erika Mitchell, *Treasurer*
Phoebe Griffiths, *Secretary*

Directors

Gerry Adams
Tony Avak
Mary Beth Brown
Linda Henry
Jeannie Miller-Bologna
Joe Roberts
Mindy Striep

Board Associates

Patty Lafferty
Kaitlin Rose
Steven Woods

THANK YOU TO OUR CONCERTO AND MARQUEE CORPORATE SUPPORTERS!



Holland America Line®
SAVOR THE JOURNEY



Joey A. Miller Foundation †

WHY SUPPORT COSMIC?

Did you know COSMIC Symphony is Southern Maryland's ONLY community orchestra?

Not only does COSMIC provide an enjoyable orchestral experience for a large cross-section of the SOMD community, but it also provides an opportunity for local musicians of all ages to come together and make music!

"I love playing my violin and I love that COSMIC has given me the opportunity to keep playing during a busy time in my life!" - Sam Waby, COSMIC Violinist

As a registered 501(c)(3) Nonprofit Organization, COSMIC strives to form strong connections with the SOMD community. COSMIC members have taught children about music through the Building Bridges organization, networked with other community organizations through the CSM Nonprofit Institute, joined together to perform with other musicians from stellar high school students to local professionals, and *so much more!*

"I am continuously impressed with the concerts put on by the COSMIC Symphony. Having this group of dedicated musicians provides a great opportunity for our community to hear incredible music. They are a local treasure!" - Eric Colvin, St. Mary's County Commissioner

COSMIC Symphony exists *for you, and because of you!* Support COSMIC by following us on social media, joining the orchestra, volunteering with us, and making financial contributions.

We are grateful for the support of our SOMD community!



HOW TO SUPPORT COSMIC

Corporate Donation Tiers

Overture Sponsor (\$250 - \$499)

Marquee Sponsor (\$500 - \$999)*

Concerto Sponsor (\$1000 - \$4999)

Maestro's Circle (\$5000+)

**Marquee Sponsors and above will have their logo included on all COSMIC media*

Individual Donation Tiers

Overture Donor (\$25 - \$499)

Sonata Donor (\$500 - \$999)

Concerto Donor (\$1000 - \$4999)

Maestro's Circle (\$5000+)

SPECIAL THANKS TO OUR CORPORATE SPONSORS!

Concerto Supporters Corporate Support

Arts Council of Calvert County

Cedar Point Federal Credit Union

Joey A. Miller Foundation, Inc.

Lexington Park Family Dentistry

Maryland State Arts Council

St. Mary's Arts Council

St. Mary's County Government

Marquee Supporters Corporate Support

BHE GT&S, LLC

G&H Jewelers

Holland America Line

Naval Systems Inc

Shore United Bank

Spalding Consulting

Overture Supporters Corporate Support

Corinthian Yacht Club

Greene Turtle California LLC

Network for Good

OSI Restaurant Partners, LLC



WE OUR DONORS!

Maestro's Circle

Concert Audience • Kathy Glockner

Concerto Donors Individual Support

Tony Avak • Frank & Christina Allen • Patricia Gray • Julia Nichols • Mindy Striep

Sonata Donors Individual Support

Karen Abrams • Anonymous Donors • Mary Beth Brown • Nancy Gould • Tami Graf • Michael Judd

Overture Donors Individual Support

Gerry Adams

Stefanie Bartley

Sue Ann Blackwell

Jeannie Miller-Bologna

Innes Borstel

Amy & Brian Boswell

Steven Brittin

Rich Buttigieg

Pamela & George Callen

Jo Anne Choporis &

Mary Choporis Russell

Eric & Joanna Colvin

Amanda Connelley

Sharon Cox

Gennie & Phil Cronan

David & Helen Didion

Virginia Diehm

Ruth Grover Dixon

Amy Ertter

Monica & William Esterling

Richard Findley

Eliot Margarete Girsang

John Giusti

Susie Glauner

Daniel Goff

Bonnie Green

Francis & Patricia Greenwell

Phoebe Griffiths

Janet Gross

Bridget Heidelberg

Amy Henderson

Judith Hinds

William & Amy Hones

Sara Houde

Dorothy Howe

Peter Huebner

Eun Hwang

Nimesh Khatri

John & Claudia Knowlton

Callie Kwiatkowski

Trudy & William Lawyer

Maggie & Dong Liang

Elena & Joshua Lim

Keith & Roberta Loker

Barbara Lorton

Patricia Malatesta

Lowell Martin

Patrick McDonald

Richard & Cheryl Michi

Jeannie Miller-Bologna

Erika Mitchell

Leroy Mrozowski

Kate Muchnick

Boris Naydich

Alan Newhouse

Jackie Nolan

Ginny Norris

James Osterhouse

David and Marci Roan

Karen & Joe Roberts

Kelley Rogers

Richard & Mary Russell

Polly Rustin

Jillian Satur

Bob Sheranko

David & Debra Showalter

Dana Smith

Mr. & Mrs. Peter Stathis

Kathy Straka

Robert Tribble

Mary Lou Troutman

Marcia Van Gemert

Barbara Vanmaastricht

Carole Vanwie

Fred & Jackie Victor

Randi Vogt

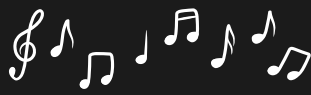
Gina Yingling

Lin & Robert Yuan

Leonard & Karen Zuza

Have you donated at least \$25 to COSMIC in the past 12 months? Is your name missing from this list? If so, please contact us at orchestra@cosmicsymphony.org so we can be sure to include you on our donor lists!

Support COSMIC at cosmicsymphony.org/donate



Legacy Giving

Legacy giving ensures you will be remembered for your generosity and commitment to COSMIC Symphony's mission long after your passing. Your gift adds an additional revenue source for COSMIC Symphony to ensure fiscal stability and builds an endowment to provide an ongoing source of income. To continue your legacy, please consider naming COSMIC in your will.

For more information regarding legacy giving, contact us!

**On legal documents, donors should list COSMIC's 501(c)(3) registered nonprofit name:
CHAMBER ORCHESTRA OF SOUTHERN MARYLAND IN CONCERT INC.

Contact us if you need our EIN.



NOTE: COSMIC Symphony will not provide tax or legal advice. Donors should discuss legacy giving with their estate attorney and financial advisor. In addition, COSMIC Symphony will not manage or monitor any planned gifts; only donations administered by an attorney, accountant, Executor, Trustee, or donor will be accepted. We strongly encourage discussions with family when considering legacy giving to benefit COSMIC Symphony.



CONNECT WITH COSMIC!

Follow us on social media to be the first to hear details about what's on the horizon for COSMIC Symphony!



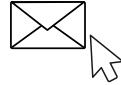
COSMIC Symphony



COSMIC Symphony Orchestra



@cosmic.symphony



Join our email list!

Word of mouth is our best advertisement! If you liked what you heard here today, tell a friend! 😊

Easy Ways to Support COSMIC Symphony:



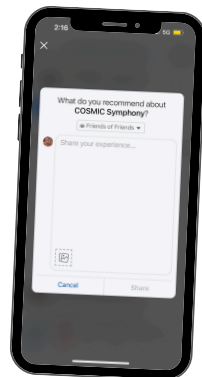
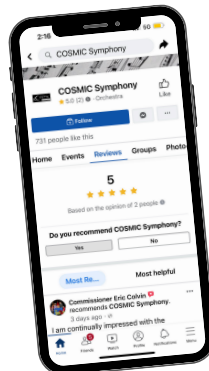
Mark yourself as “GOING” to our Facebook events when you plan to attend a concert, and send invites to your Facebook Friends!



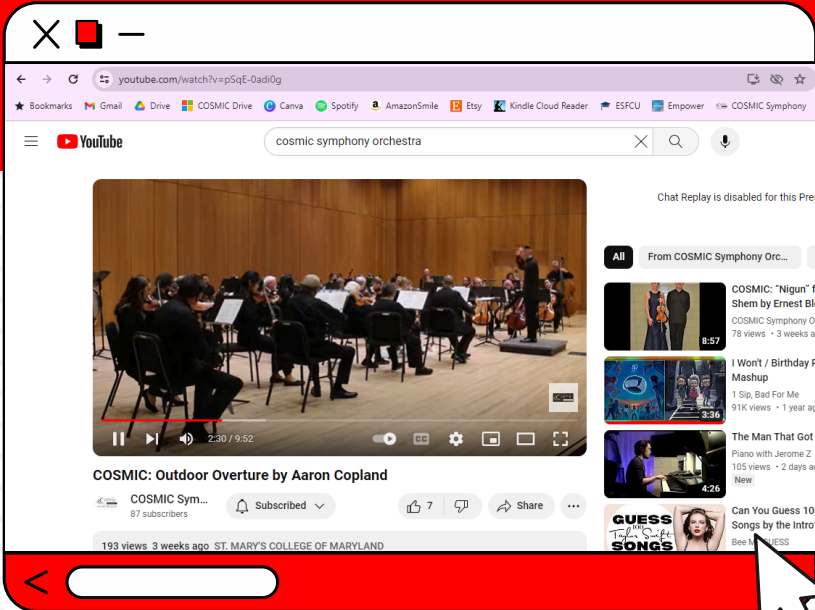
“Share” COSMIC social media posts to your Feed and Stories!

Leave us a Review on Facebook!

Your feedback is very important to us!



COSMIC IS ON YOUTUBE!



Miss one of our concerts?

Can't get a performance out of your head?

Need a little more COSMIC to hold you over until next season?

 **YOU'RE IN LUCK!** 

Professional, high-quality videos of COSMIC performances are available on our YouTube channel!

Subscribe, and never miss a thing!

[HTTPS://WWW.YOUTUBE.COM/@COSMIC.SYMPHONY](https://www.youtube.com/@cosmic_symphony)



*All experienced
musicians
welcome to
audition!*

PLAY AN INSTRUMENT? JOIN COSMIC SYMPHONY!

REHEARSALS: TUESDAYS, 6:30 - 9:00 PM
FROM AUGUST TO MAY
IN LUSBY, MD



*Showcase your talent and grow with an amazing
group of musicians in your community!*

QUESTIONS? EMAIL ORCHESTRA@COSMICSYMPHONY.ORG
OR VISIT COSMICSYMPHONY.ORG/NEW-MEMBERS/

DON'T MISS OUR SEASON OPENER!

COSMIC Symphony Presents



Radiant Rhapsodies

Directed by Will Esterling

Featuring Baron Fenwick

**FREE
CONCERTS;
DONATIONS
ACCEPTED!**

**Performing Gershwin's *Rhapsody in Blue*,
Queen's *Bohemian Rhapsody*,
and much more!**

**Saturday Oct. 12, 2024 @ 3:00 PM
Chesapeake Church
Huntingtown, MD**

**Sunday Oct. 13, 2024 @ 3:00 PM
Nancy R. & Norton T. Dodge PAC
St. Mary's College of Maryland**

*Please note that Calvert County performances will be on Saturdays and
St. Mary's County performances will be on Sundays for the '24 - '25 season!*

Visit linktr.ee/cosmicsymphony for details!



SAVE THE DATE FOR OUR HOLIDAY CONCERT!



COSMIC Symphony Presents

The More, The Merrier

Directed by Will Esterling

Hosted by David W. Cook

Saturday Dec. 07, 2024 @ 3:00 PM
Chesapeake Church
Huntingtown, MD

Sunday Dec. 08, 2024 @ 3:00 PM
Nancy R. & Norton T. Dodge PAC
St. Mary's College of Maryland

FREE CONCERTS!

Donations Accepted

Details at linktr.ee/cosmicsymphony



SAVE THE DATES!



FOR OUR UPCOMING SEASON

OCTOBER
12 & 13
2024

RADIANT RHAPSODIES

FEATURING BARON FENWICK



DECEMBER
07 & 08
2024

THE MORE, THE MERRIER

HOSTED BY DAVID W. COOK



FEBRUARY
22 & 23
2025

RESONANT ROMANCE

FEATURING YAC WINNERS



APRIL
26 & 27
2025

MUSICAL IN CONCERT

FEATURING THE NEWTOWNE PLAYERS



For more information:



linktr.ee/cosmicsymphony

ALL SHOWS FREE & OPEN TO THE PUBLIC!

PROGRAM NOTES

Klaus Badlelt, "Pirates of the Caribbean" (2003).

John Williams, Duel of the Fates from "Star Wars I: The Phantom Menace" (1999); Across the Stars from "Star Wars II: Attack of the Clones" (2002); Revenge of the Sith from "Star Wars III: Revenge of the Sith" (2005); Princess Leia's Theme from "Star Wars IV: A New Hope" (1977); The Imperial March (Darth Vader's Theme) from "Star Wars V: The Empire Strikes Back" (1980); Star Wars (Main Title) from "Star Wars", Episodes I-VI (1977-2005).

James Horner, My Heart Will Go On from "Titanic" (1997).

Andrew Lloyd Webber, Memory from "Cats" the stage musical (1981) and movie (2019).

Claude-Michel Schonberg, I Dreamed a Dream from "Les Misérables" the stage musical (1980) and movie (2012).

Adele Adkins and Paul Epworth, Skyfall from "Skyfall" (2012).

Monty Norman, The James Bond Theme from "Dr. No" (1962); John Barry, Goldfinger from "Goldfinger" (1964); Paul and Linda McCartney, Live and Let Die from "Live and Let Die" (1973); Marvin Hamlisch, Nobody Does It Better from "The Spy Who Loved Me" (1977).